

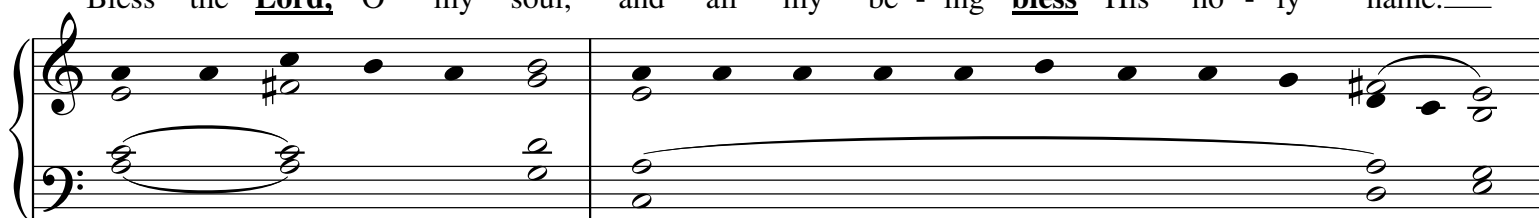
• Year C •

7th SUNDAY in ORDINARY TIME

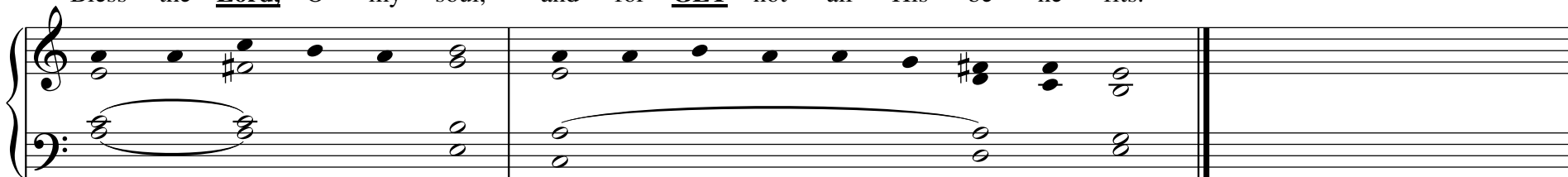


Bless the Lord, O my soul, and all my be - ing bless His ho - ly name.---

1

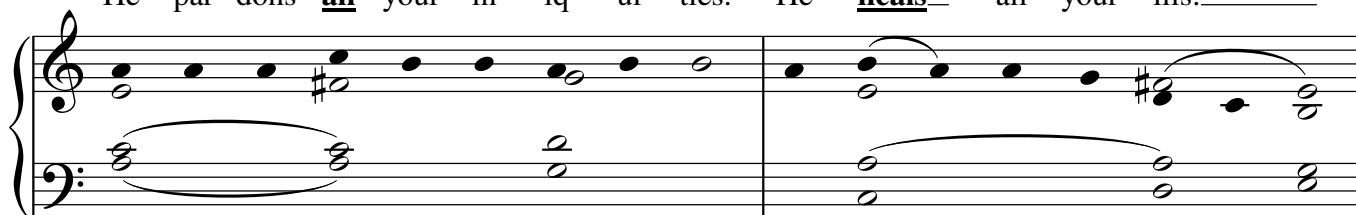


Bless the Lord, O my soul, and for - GET not all His be - ne - fits.

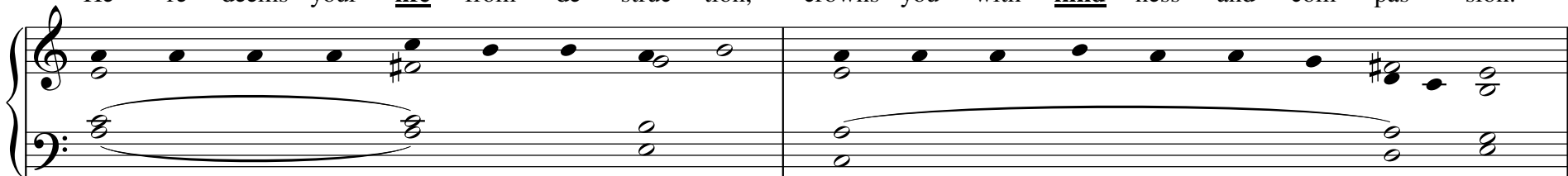


He par - dons all your in - iq - ui - ties. He heals all your ills.---

2



He re - deems your life from de - struc - tion, crowns you with kind - ness and com - pas - sion.



Mer - ci - ful and gra-cious is the Lord, slow to an - ger and a - bound ing in___ kind - ness.

3

Musical notation for the first system, featuring a treble and bass staff with a piano accompaniment and a vocal line. The piano part consists of sustained chords in the left hand and a melodic line in the right hand. The vocal line is written in a single staff with a treble clef and a key signature of one sharp (F#).

Not ac - cord - ing to our sins does He deal__ with us. Nor does He re - quite us ac - cord - ing to our crimes. __

Musical notation for the second system, featuring a treble and bass staff with a piano accompaniment and a vocal line. The piano part consists of sustained chords in the left hand and a melodic line in the right hand. The vocal line is written in a single staff with a treble clef and a key signature of one sharp (F#).

As far as the east is from the west, so far has He put our trans - GRES - sions from us. ____

4

Musical notation for the third system, featuring a treble and bass staff with a piano accompaniment and a vocal line. The piano part consists of sustained chords in the left hand and a melodic line in the right hand. The vocal line is written in a single staff with a treble clef and a key signature of one sharp (F#).

As a fa - ther has com - pas - sion on His chil - dren, so the Lord has com - pas - sion on those who fear__ Him. __

Musical notation for the fourth system, featuring a treble and bass staff with a piano accompaniment and a vocal line. The piano part consists of sustained chords in the left hand and a melodic line in the right hand. The vocal line is written in a single staff with a treble clef and a key signature of one sharp (F#).