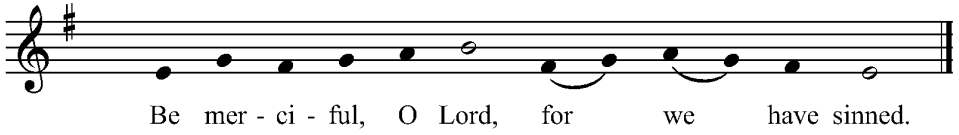


Be Merciful, O Lord



*Text: Lectionary for Mass, © 1969 ICEL. All rights reserved. Used by permission.
Music: PARCE DOMINE, Chant, Mode I; adapted by Brian Michael Page, b. 1964,
© 2008 Christus Vincit Music.*

Be Merciful, O Lord

Ash Wednesday, Lent 1 (A)

ANTIPHON



Be mer - ci - ful, O Lord, for we have sinned.

VERSES



1. Have mercy on me, O God, in your good - ness; in the greatness of your com - pas - sion wipe out my of - fense.
2. For I acknowledge my of - fense, and my sin is al - ways be - fore me.
3. A clean heart create for me, O God, and a steadfast spir - it re - new with - in me.
4. Give me back the joy of your sal - va - tion, and a willing spir - it sus - tain in me.



1. Thoroughly wash me from my guilt, and of my sin cleanse me.
2. Against you on - ly have I sinned, and done what is e - vil in your sight.
3. Cast me not out from your presence, and your Holy Spirit take not from me.
4. O Lord, o - pen my lips, and my mouth shall pro - claim your praise.

Text: Lectionary for Mass, © 1969 ICEL. All rights reserved. Used by permission.

Music: PARCE DOMINE, Chant, Mode I; adapted by Brian Michael Page, b. 1964, © 2008 Christus Vincit Music.

Be Merciful, O Lord

Ash Wednesday, Lent 1 (A)

ANTIPHON

Be mer - ci - ful, O Lord, for we have sinned.

The antiphon is written in G major (one sharp) and 4/4 time. It consists of a vocal line and a piano accompaniment. The vocal line begins with a half note G4, followed by quarter notes A4, B4, C5, D5, E5, F#5, G5, and a final half note G5. The piano accompaniment features a steady bass line with chords in the right hand.

VERSES

1. Have mercy on me, O God, in your good - ness; in the greatness of your com - pas - sion wipe out my of - fense.
2. For I acknowledge my of - fense, and my sin is al - ways be - fore me.
3. A clean heart create for me, O God, and a steadfast spir - it re - new with - in me.
4. Give me back the joy of your sal - va - tion, and a willing spir - it sus - tain in me.

The verses are written in G major and 4/4 time. Each verse is set to the same melodic line as the antiphon. The piano accompaniment is consistent with the antiphon.

Text: Lectionary for Mass, © 1969 ICEL. All rights reserved. Used by permission.

Music: PARCE DOMINE, Chant, Mode I; adapted by Brian Michael Page, b. 1964, © 2008 Christus Vincit Music.

1. Thoroughly wash me from my guilt, and of my sin cleanse me.
2. Against you on - ly have I sinned, and done what is e - vil in your sight.
3. Cast me not out from your presence, and your Holy Spirit take not from me.
4. O Lord, o - pen my lips, and my mouth shall pro - claim your praise.