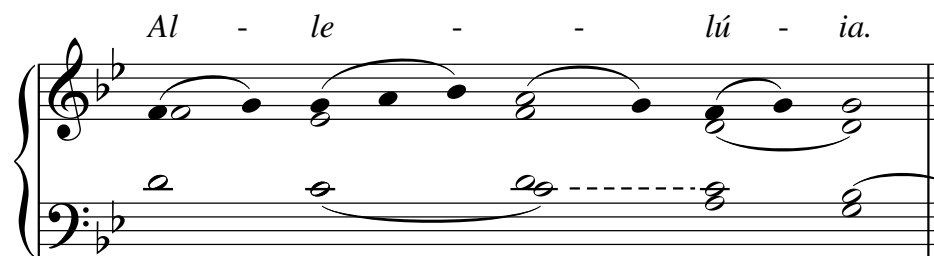


Saint Stanislaus Kostka Alleluia

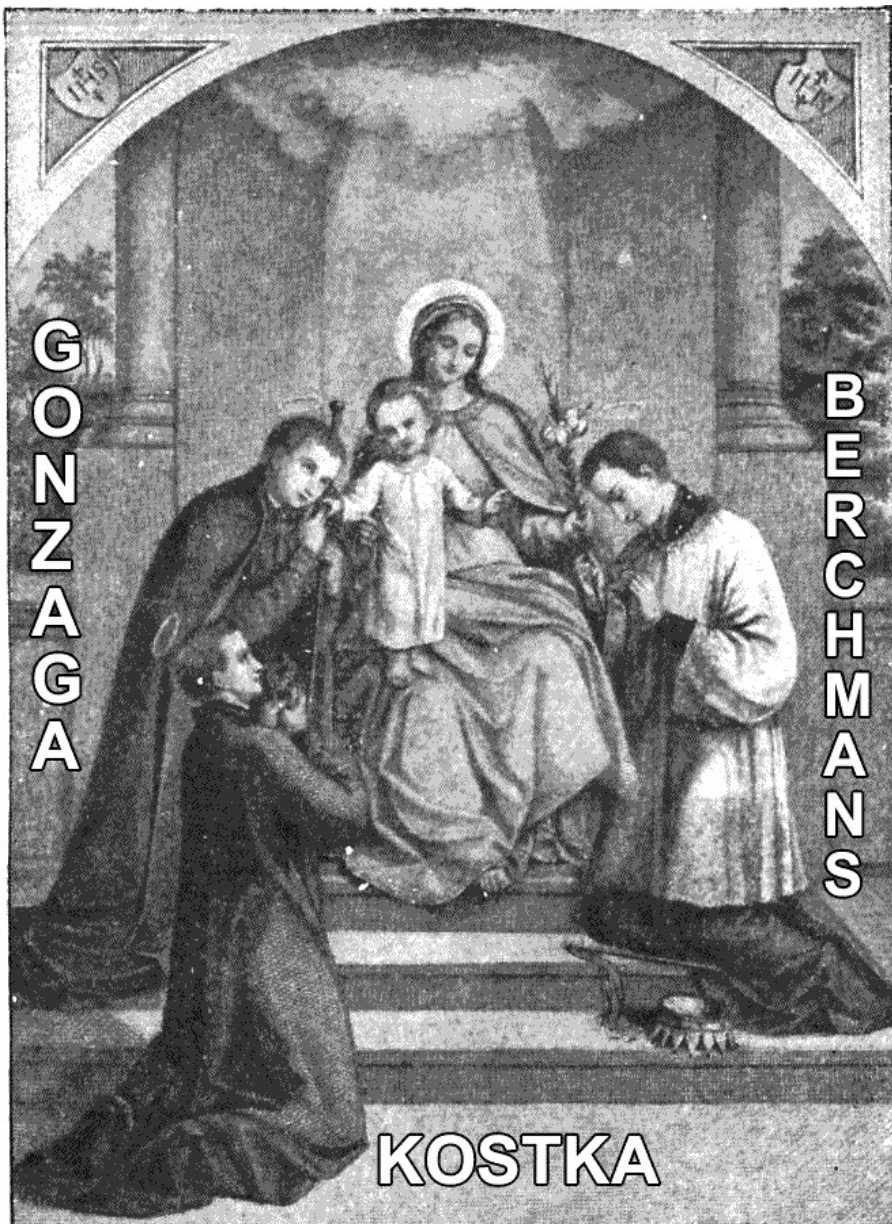


Version: HIGHER KEY

A Cantor intones:



All then join in:



(aw) _____ (aw) _____ (aw) _____

This system consists of two staves. The treble staff contains a series of notes with slurs and ties, including a dotted quarter note. The bass staff provides a harmonic accompaniment with chords and moving lines. The system is divided into three measures by vertical bar lines.

A Cantor sings:

My sheep hear my voice, says the Lord. I know them and they follow Me.

This system includes the lyrics "My sheep hear my voice, says the Lord. I know them and they follow Me." The musical notation follows the same two-staff format as the first system, with a treble staff for the vocal line and a bass staff for the accompaniment. The lyrics are placed above the treble staff.

All then join in:

Al - le - - - - - lú - ia. (aw) _____

This system includes the lyrics "Al - le - - - - - lú - ia." followed by a breath mark "(aw)". The musical notation continues with two staves, maintaining the same style as the previous systems. The lyrics are placed above the treble staff.

(aw) _____ (aw) _____

This system continues the musical notation with two staves. It begins with a breath mark "(aw)" above the treble staff. The notation includes various note values and rests, with a final double bar line at the end of the system.