

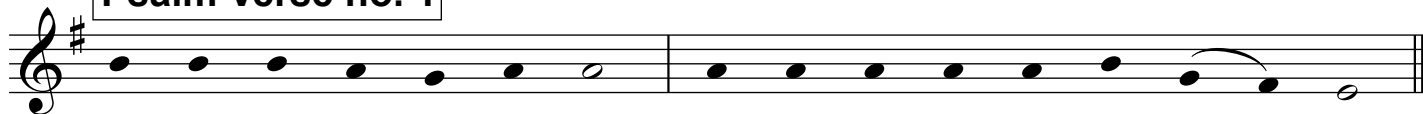
R.



You will be my wit-ness - es to all_ the world.

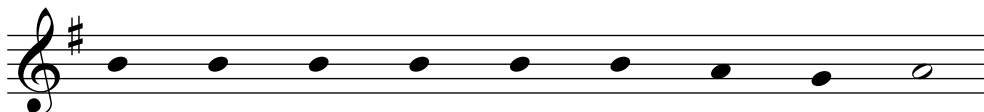
Based on a tone by Fr. Gregory Murray, OSB

Psalm Verse no. 1

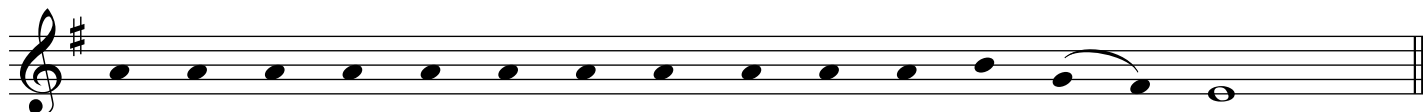


Praise the Lord, **all** you na - tions, glo - ri - fy him, all **YOU** peo - ples!

**Psalm
Verse
no. 2**



For stead - fast is his kind - **ness** t'ward us,



and the fi - del - i - ty of the Lord en - dures **for** - ev - er.

If you want this score transposed to a different key, please E-mail: chabanel@ccwatershed.org

